

MORGEN -



UND

ABENDLIEDER



Violoncello I

Ursula Wippermann

MORGEN- UND ABENDLIEDER

8 Cello - Trios

	Seite
1. Morgenlied	1
2. Vogellied	1
3. Schokobrötchen - Lied	2
4. Eierlied	4
5. Abendlied	5
6. Tanz der Eintagsfliegen am Abend	6
7. Julis Schlaflied	7
8. Traumlied (Lied vom Einzelmännchen)	8

1

MORGENLIED

Musical score for 'MORGENLIED' in bass clef with a key signature of one sharp (F#). The score consists of five staves of music. The first staff begins with a dynamic marking of *f* and includes a fingering '5' above the final measure. The second staff includes a dynamic marking of *mf* and a fingering '9' above the first measure. The third staff includes a dynamic marking of *f* and a fingering '17' above the first measure. The fourth staff includes a dynamic marking of *p* and a fingering '21' above the first measure. The fifth staff concludes the piece with a *p* dynamic marking.

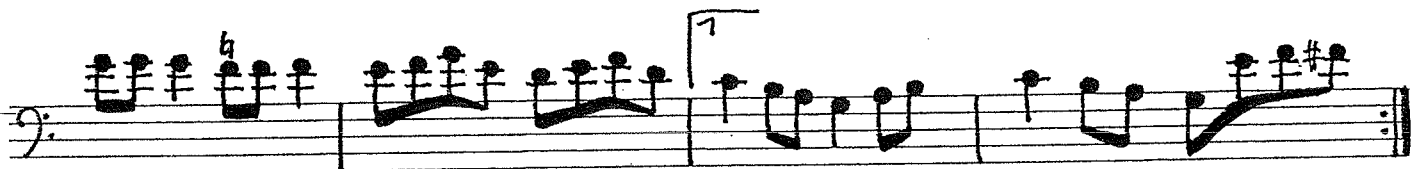
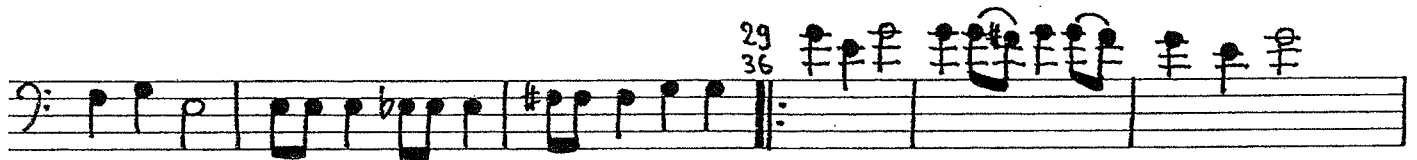


2

VOGELLIED

Musical score for 'VOGELLIED' in bass clef with a key signature of one sharp (F#). The score consists of three staves of music. The first staff features a common time signature 'C' and includes a dynamic marking of *p* and a fingering '5' above the first measure. The second staff includes a dynamic marking of *p* and a fingering '9' above the first measure. The third staff includes a dynamic marking of *p* and a fingering '13' above the first measure.

SCHOKOBRÖTCHEN-LIED



2

43

47

51

55

56

61

61

65

4

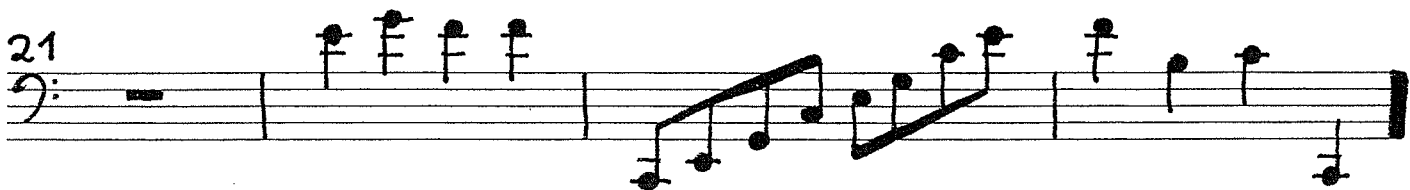
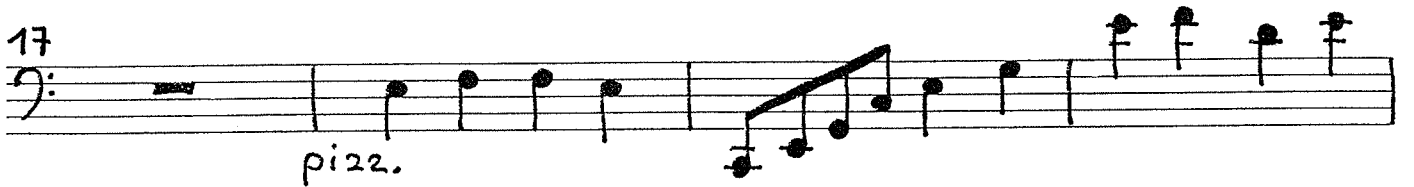
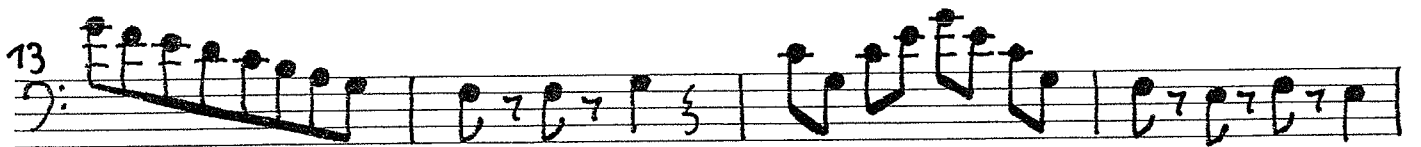
4



EIERLIED

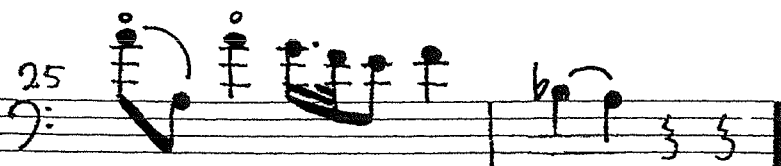
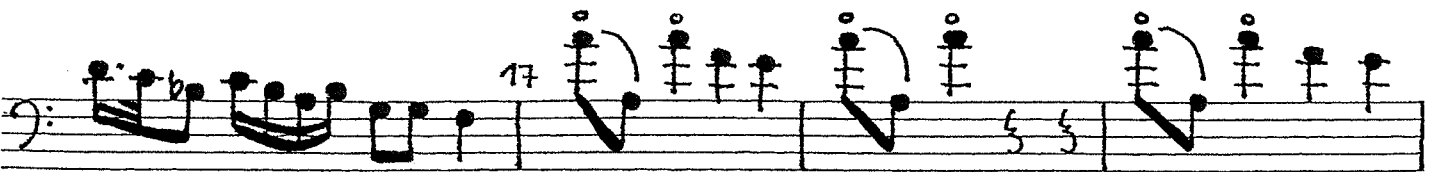


ABENDLIED



6 TANZ DER EINTAGSFLIEGEN

AM ABEND

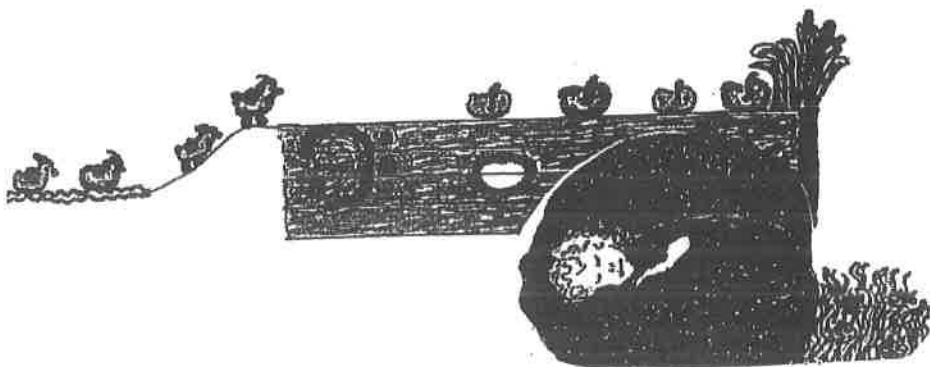
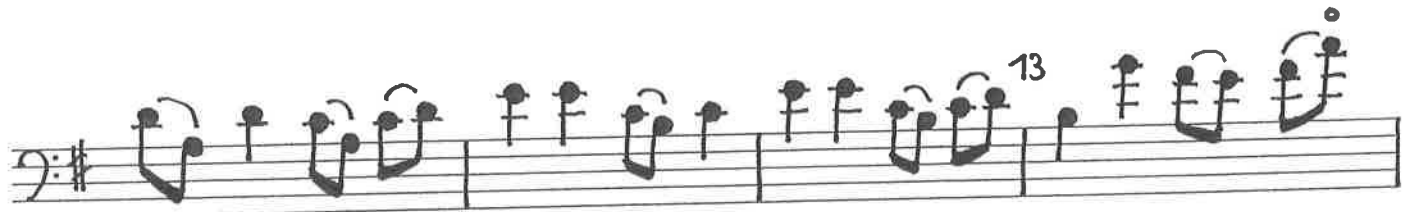
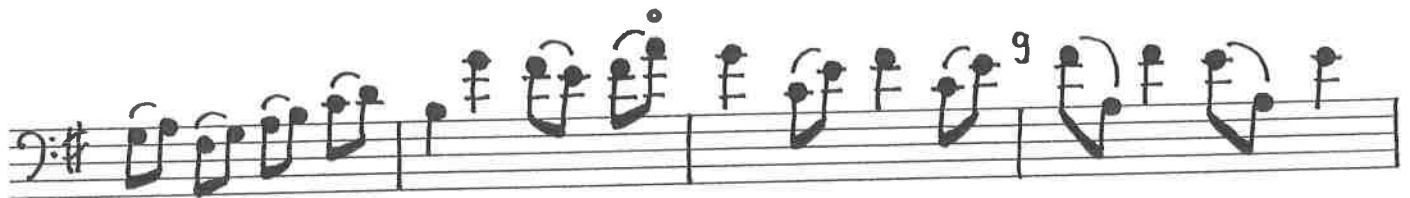
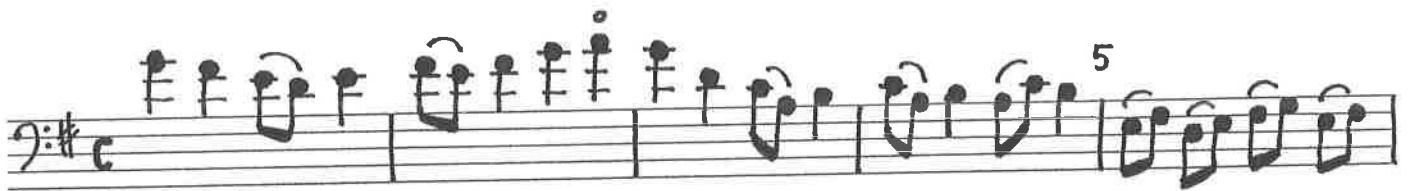




7



JULIS SCHLAFLIED



8

TRÄUMLEBEN



7, 11

mf

5
15

21

rit.
dim. - - - - -

p

acc. cresc.

mf

30

34

I^a

42
46

I^a
II^a
I^a

50

f

54
58

7

2 62

66 70 7 2

74 78

82



