

**LIEDER DER  
JU-LI-PRACHTENTEN**

URSULA WIPPERMANN

# LIEDER DER JU-LI-PRACHTENTEN für Cello-Trio

	Seite
<b>I VOM LEBEN IN FREIHEIT</b>	
1. Frühlingslied der Ju-Li-Prachtenten	1
2. Spiel der Entchen	1
3. Tanz der jungen Erpel	2
<b>II BEDROHUNG, RETTUNG AUS GROSSER GEFahr UND GLÜCKLICHES ENDE</b>	
4. Marsch der Ju-Li-Prachtenten (in den kaiserlichen Kochtopf)	3
5. Jubellied der Ju-Li-Prachtenten nach der Begnadigung durch den Kaiser	3
6. Nacht und Sonnenaufgang in den Gärten des Kaisers	5

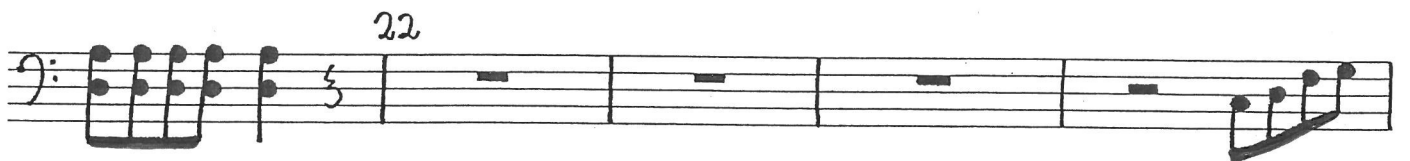
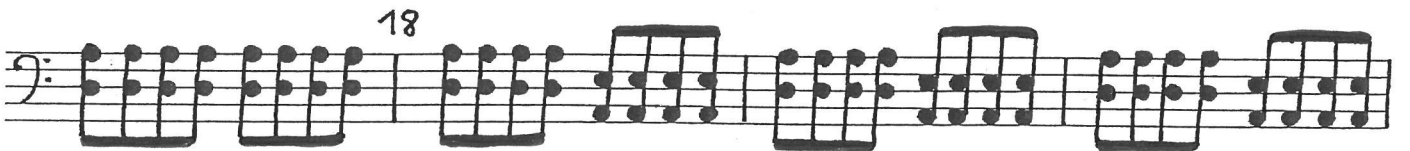
# FRÜHLINGSLIED DER JU-LI-PRACHTENTEN

Musical score for 'Frühlingslied der Ju-li-Prachtenten' in bass clef, 6/8 time signature. The score consists of five staves. The first staff begins with a *pizz. p* instruction and contains several chords with circled dots above them. The second staff has a *arco p* instruction. The third staff is marked *mf* and contains a melodic line with slurs. The fourth staff is marked *f* and contains a melodic line with slurs. The fifth staff contains a melodic line with slurs and a *pizz. p* instruction. A legend indicates that '+' symbols represent *Linkspizzicato*. Measure numbers 5, 11, 15, 19, 23, and 25 are marked above the staves.

# SPIEL DER ENTCHEN

Musical score for 'Spiel der Entchen' in bass clef, common time (C). The score consists of five staves. The first staff is marked *mf* and contains a melodic line with slurs. The second staff continues the melodic line. The third staff is marked *f* and contains a melodic line with slurs. The fourth staff is marked *Fine* and contains a melodic line with slurs. The fifth staff contains a melodic line with slurs and a *pizz. p* instruction. A legend indicates that '+' symbols represent *Linkspizzicato*. Measure numbers 1, 18, 20, 24, and 16 are marked above the staves. The score concludes with *cresc.*, *f*, *pp*, and *Da capo al Fine* instructions.

# TANZ DER JUNGEN ERPEL







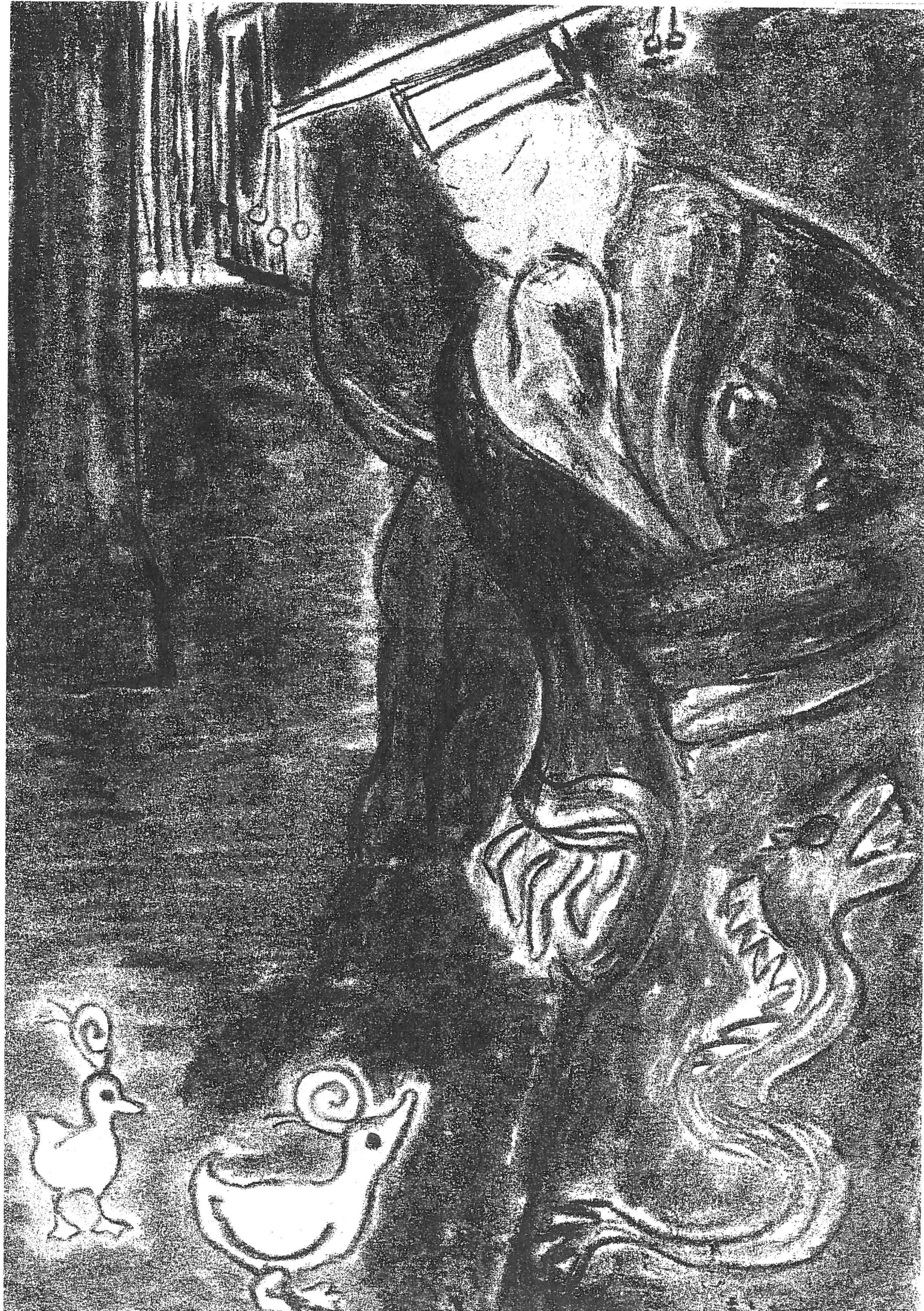
*a tempo*  
rit. --- *mf*  
8 9  
17

2 25  
tr 3

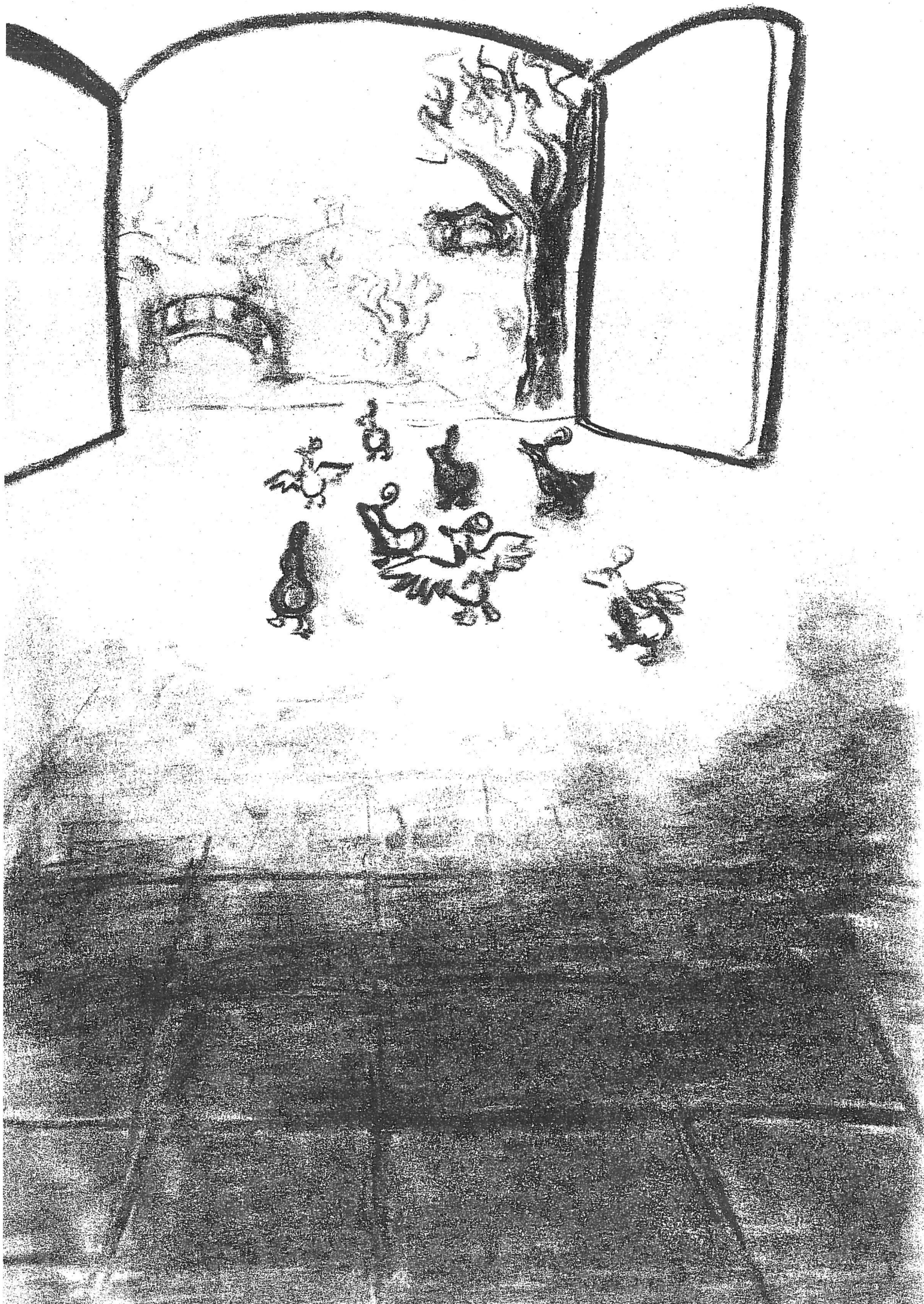
tr 33

41  
*f*

tr 49  
*pizz. f*











sempre cresc.

